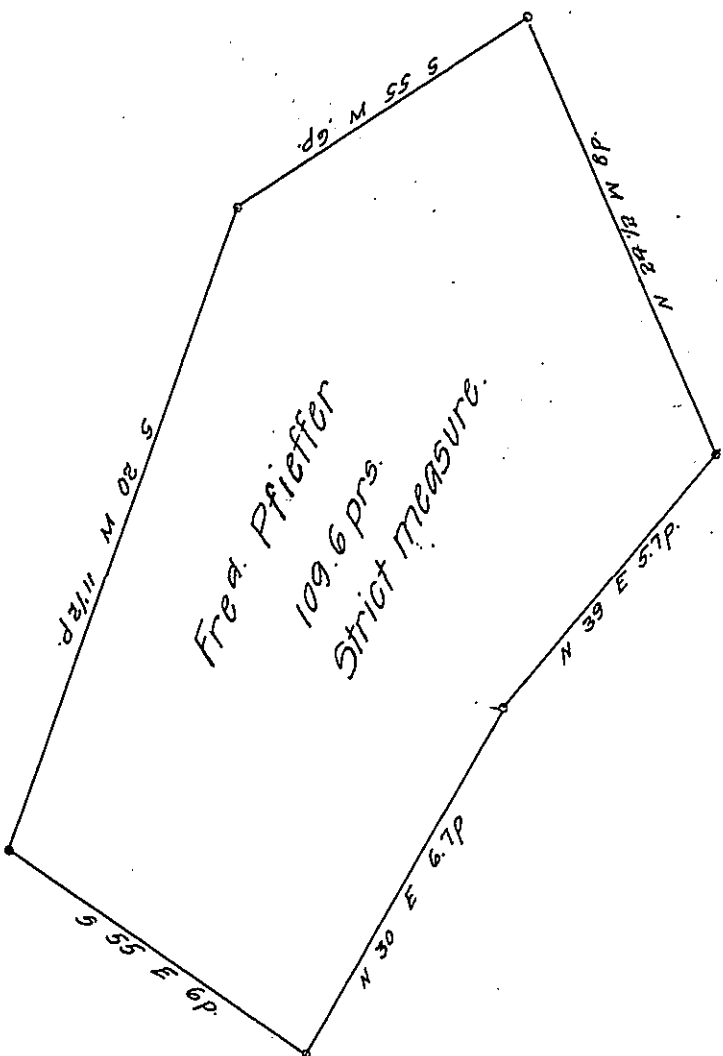


✓

York County Shore.



Lancaster County Shore

Draught of "Pazzling Island" Situate in the River Susquehanna, Martick township Lancaster County lying between 2 Islands, the one called Reeds Island No. 2 the other Hages Rock Island opposite Reeds landing on the east, containing one hundred and nine perches and six tenths, Strict measure. Surveyed in pursuance of a warrant granted to Frederick Pfeiffer, dated the 6th day of December A.D. 1819. Certified and Examined, the 2^d day of April A.D. 1821.

p. Jas Black D.S.

To Jacob Spangler Esqr.

Surveyor Genl

IN TESTIMONY that the above is a copy of the original remaining on file in the Department of Internal Affairs of Pennsylvania, made conformably to an Act of Assembly approved the 16th day of February, 1833, I have hereunto set my Hand and caused the Seal of said Department to be affixed at Harrisburg, this twelfth day of December 1907.

Henry Hower
Secretary of Internal Affairs.